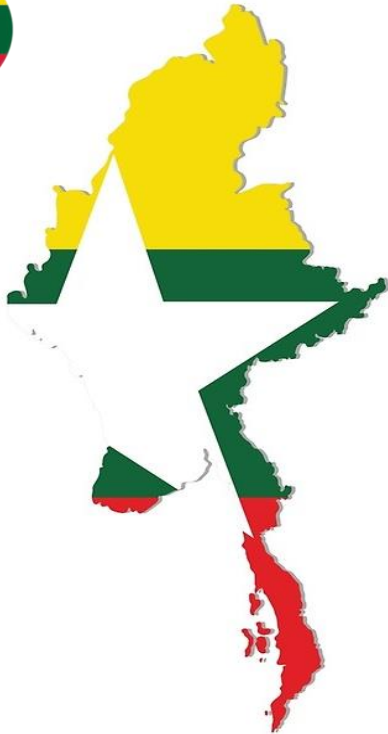




OCEAN NETWORK EXPRESS

ONE Ocean Network Express (Myanmar) Ltd.

Service Profile



- ⚓ ONE Outlook – General
- ⚓ About ONE Ocean Network Express (Myanmar) Ltd
- ⚓ Services available

OCEAN NETWORK EXPRESS



Inauguration of Ocean Network Express

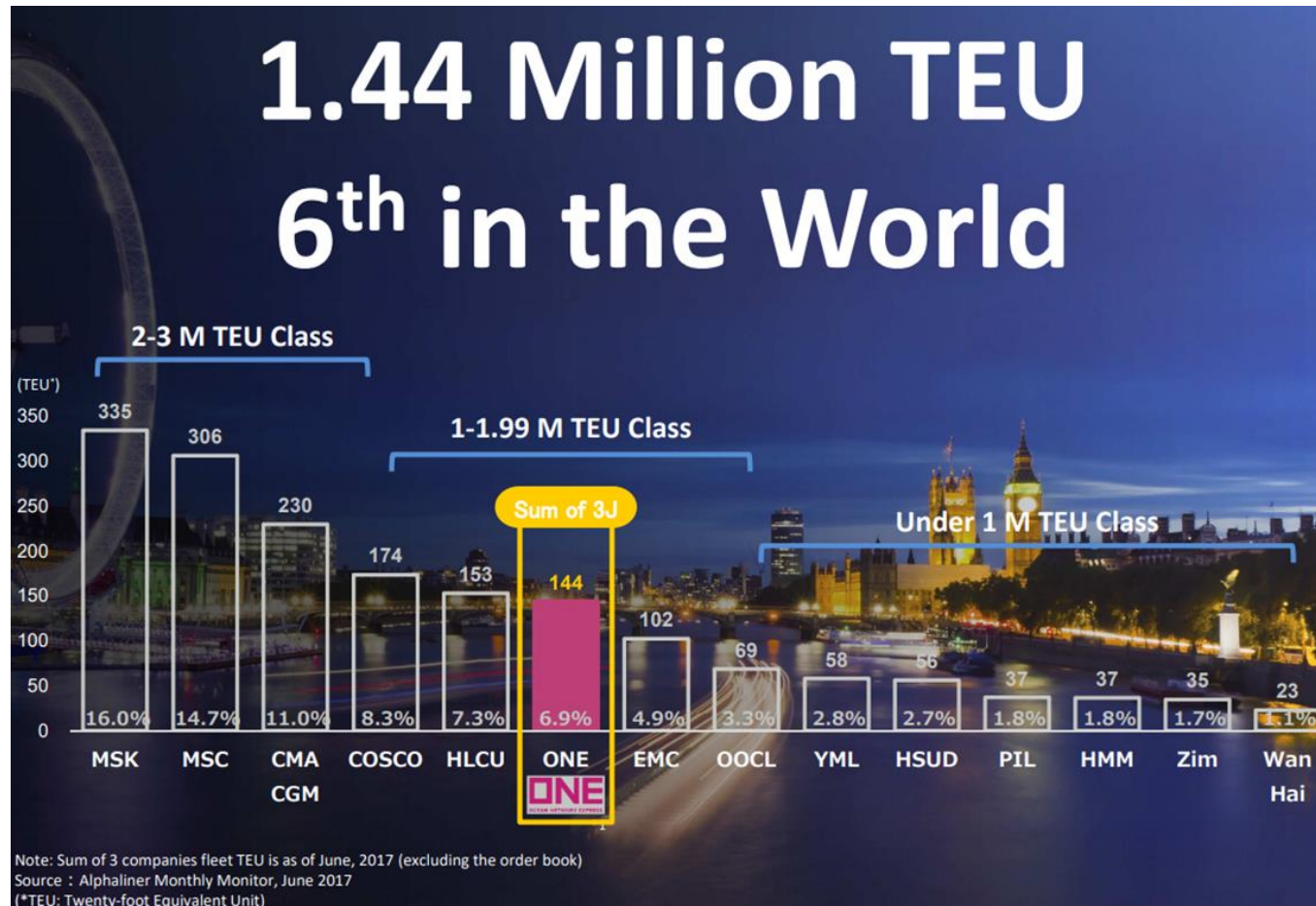
Business Integration of container shipping by three Japanese shipping companies.

Ocean Network Express was established on July 7, 2017 by the integration of MOL, NYK and 'K' Line.

The Holding company was set up in Japan on July 7th 2017 and simultaneously a business management company was established in Singapore.

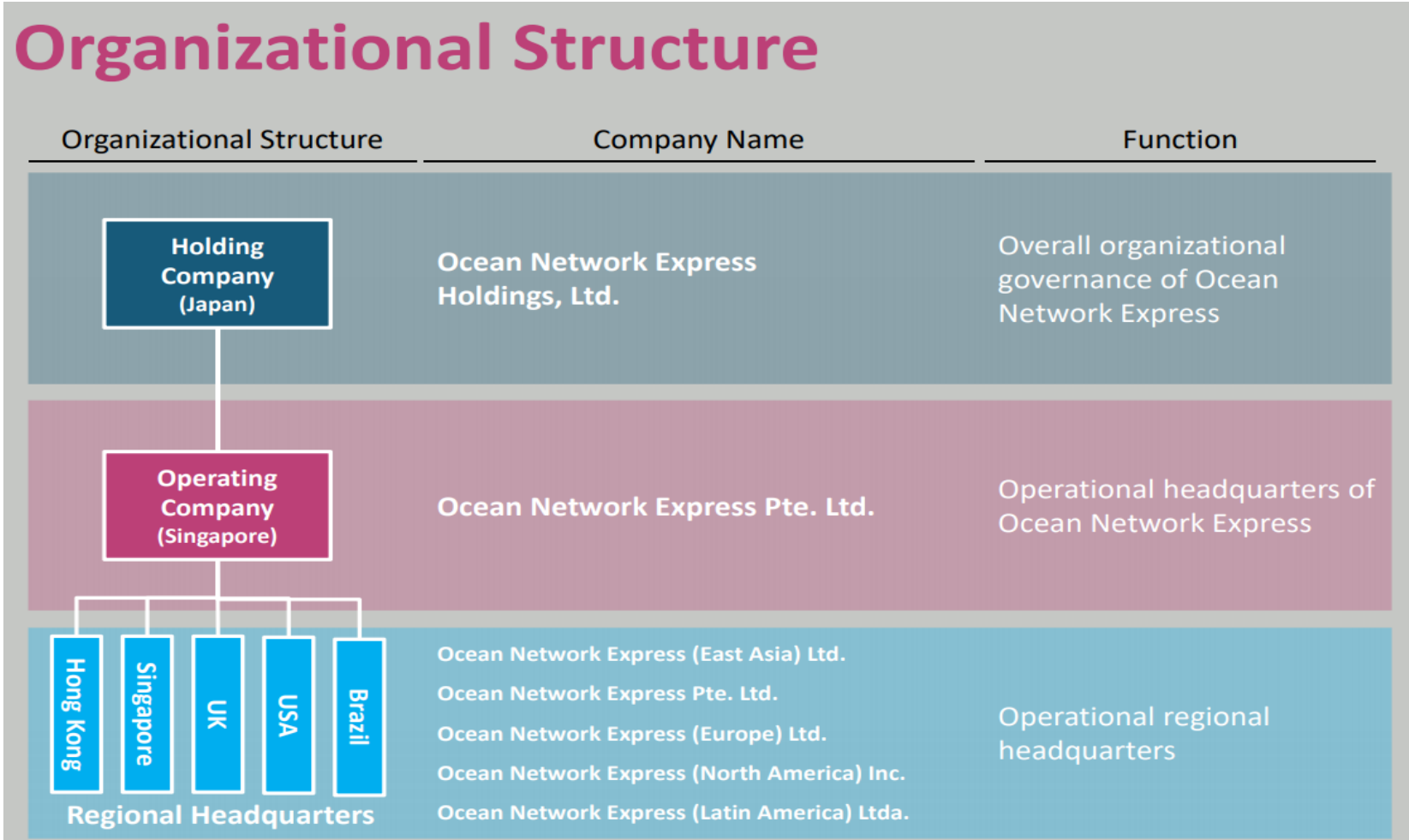
Regional headquarters have been established in Hong Kong, Singapore, UK, USA and Brazil and services are scheduled to start in April 2018.

OCEAN NETWORK EXPRESS



OCEAN NETWORK EXPRESS

Organizational Structure



OCEAN NETWORK EXPRESS

Plan to develop services across over 90 countries



Holding Company : **1** Japan(Tokyo)
Global Headquarters : **2** Singapore

Regional Headquarters :
3 Hong Kong
4 Singapore
5 UK (London)
6 USA (Richmond, VA)
7 Brazil (Sao Paulo)

ONE Ocean Network Express (Myanmar) Ltd

In Myanmar >>> We have

ONE Ocean Network Express (Myanmar) Ltd

No.422, #11-02, International Commercial Center, Strand Road,
Botahtaung Township, Yangon, Myanmar.

Main : +95-1-202091, +95-1-202083

Website : www.one-line.com



Feeder - TMM

ONE

OCEAN
NETWORK
EXPRESS

East Asia

TMM: Thailand Malaysia Myanmar



KEY TRANSIT TABLE

S/B	PKG	SIN	BKK	N/B	SIN	RGN	RGN	PKG
RGN	4	6	10	BKK	3	7	11	14
RGN	2	4	8	SIN		3	7	10
PKG		1	5					
SIN			3					

KEY TRANSIT TABLE - UNLOCODE PORT NAME & COUNTRY NAME

RGN: Yangon, Myanmar | PKG: Port Kelang, Malaysia | SIN: Singapore, Singapore | BKK: Bangkok, Thailand

EFFECTIVE VESSEL:

TBD

PORT ROTATION

ORIGIN	ETA/ETD	TERMINAL
Yangon	SUN/WED	MIP
Yangon	WED/FRI	MITT
Port Kelang	SUN/MON	TBD
Singapore	TUE/WED	PSA Singapore
Bangkok	SAT/SUN	TBD
Singapore	WED/THU	PSA Singapore
Yangon	SUN/WED	MIP
Turnaround days:	21	

Weekly/Fixed Day Service

Last update : 14-Feb-2018

Copyright © 2017 Ocean Network Express Pte. Ltd. All Rights Reserved

NOTE: Transit times and port rotation are as of now and subject to change

Feeder - YGX

- We have slot sharing with SAMUDERA weekly 200 Teus Inbound and Outbound
- In Asia World Port Terminal (AWPT) & Myanmar Industrial Port (MIP)

Feeder - FAS

- Also could utilize space on IAL, ACL & X-Press (Confirmation are to be advised)
- In Asia World Port Terminal (AWPT) & Myanmar Industrial Port (MIP)

Container Service



Dry Special Service



DG Cargo Handlings



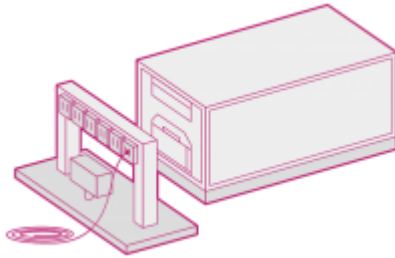
Out of gauge cargo

- Handle not only normal in-gauge cargoes, but also any oversized or irregularly-shaped cargoes.

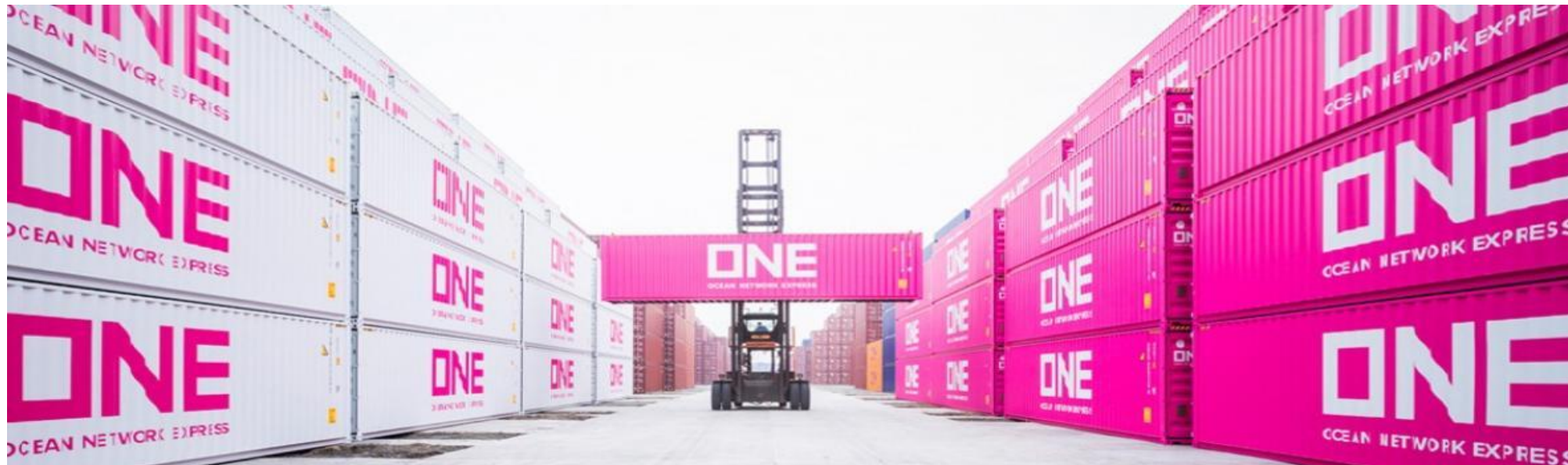
Out Of Gauge (O.O.G.) cargo

- O.O.G. cargo exceeds the internal dimensions of a container by length, width or height. Depending on its dimensions, O.O.G. cargo is loaded on an open top or flat rack container.

Reefer Container Service



- Refrigerated container is a container with insulation material, equipped with refrigeration unit.
- Refrigerated containers can maintain the temperature inside the storage as desired.
- It is possible to maintain the temperature inside the hold even under severe external air condition, helping to maintain the quality of the cargo.



GOH (Garment On Hanger)



ONEMM handles garments including bar types and strings types. Through our location service centers, we conduct an efficient program for hanging and flat-pack in G.O.H. handling services.

Service outlines

- 1) Single Bar (String Type)
- 2) Double Bar (Round Bar Type – One Layer)
- 3) Double Bar (Round Bar Type – Two Layers)
- 4) Double Bar (Round Bar Type – Three Layers)
- 5) Double Bar (Round Bar Type – Four Layers)
- 6) Any type of GOH as customer' requirement style.

(We are very confident of our pay load of GOH stuffing)

ONE

OCEAN NETWORK EXPRESS

Thank you!